

ROLLING GRILLES

STEELWEAVE™ METAL MESH GRILLE

Models EAG10C, EAG10V, & EAG10S



INCREASE VISUAL APPEAL WHILE MAINTAINING SECURITY

ELEGANT AESTHETICS

The SteelWeave Metal Mesh Grille complements and enhances any building design while still providing security. SteelWeave's woven **stainless steel** mesh material is a completely new grille design that exudes elegance, while its multiple patterns transform a standard security item into a piece of rolling art.

SECURITY

Features a durable type 316 stainless steel curtain that will provide protection for the people or objects behind the grille while still allowing visibility, even in the most corrosive environments. Optional security features control via a master panel dependent on your choice of operator.

CONVENIENT MODELS AVAILABLE

SteelWeave Metal Mesh is offered in three convenient models that are customized to meet the needs of your specific application. We offer the Aesthetic Reveal for designs meant to display the entire grille, the Aesthetic Conceal model provides a finished look that buries the perimeter of the grille and the Service model for those areas that require functionality with a tight weave to eliminate small trespassers. The material, motor recommendation and components will vary based on model.

APPLICATIONS

The SteelWeave Metal Mesh Grille is ideal for storefronts, malls, bars, restaurants, cafeterias, food processing and all other applications that require an aesthetically pleasing grille. It can also be used as a room or space divider.

800.294.4358 | cooksondoor.com

CornellCookson, LLC. is an ISO 9001:2015 registered company
7.2020

COOKSON Preferred door solutions.®

ROLLING GRILLES **STEELWEAVE™ METAL MESH GRILLE** Models EAG10C, EAG10V, & EAG10S

STANDARD COMPONENT MATERIALS AND FINISHES BY MODEL

The table below outlines our standard models. Each model is customized to meet your design needs.

	Aesthetic Conceal - EAG10C provides a finished look that buries the perimeter of the grille	Aesthetic Reveal - EAG10V for designs meant to display the entire grille	Service- EAG10S for areas that require functionality with a tight weave to eliminate small trespassers
Guide Finish	Aluminum	Stainless Steel	Aluminum
Bottom Bar Finish	Stainless Steel	Stainless Steel	Aluminum
Motor	Externally Mounted	Concealed Tube Motor	Externally Mounted
Motor Mounting Location	Front of Coil	Inside of Coil	Front of Coil
Motor Cover	No	Yes	No
Hood Finish	N/A	Stainless Steel	N/A

A CHOICE OF CURTAIN PATTERNS

Five different curtain designs provide optimum aesthetics, visibility and ventilation.

STANDARD



Lago

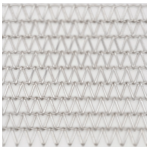


Tigris

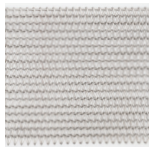
CUSTOM-DESIGNED SOLUTIONS

The SteelWeave Metal Mesh Grille is extremely customizable. With two standard curtain designs and three special order curtain designs, we are sure to offer something that goes with your existing design scheme. In addition to these 5 curtain designs, we also offer etching on Lago which will allow you to display your logo, branding or other designs as applicable.

CUSTOM DESIGNS



Helix 24*



Helix 48*



Sambesi*

*Pattern is available as special order that requires custom component design work. Contact our ADS team for details.

etched storefront



exterior bar



interior bar



interior bar

UNIQUE END RETENTION PROVIDES...

Windloads withstanding up to:

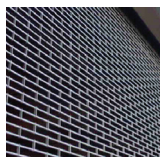
► 20 PSF - Tigris

► 10 PSF - Lago

CUSTOM-DESIGNED SOLUTIONS

Contact our experienced Architectural Design Support Team for help in customizing our products to fit your specific application.

🌐 www.architectdoorhelp.com



800.294.4358 | cooksondoor.com

CornellCookson, LLC. is an ISO 9001:2015 registered company
7.2020

COOKSON Preferred door solutions.®