



Carriage House Door
COMPANY

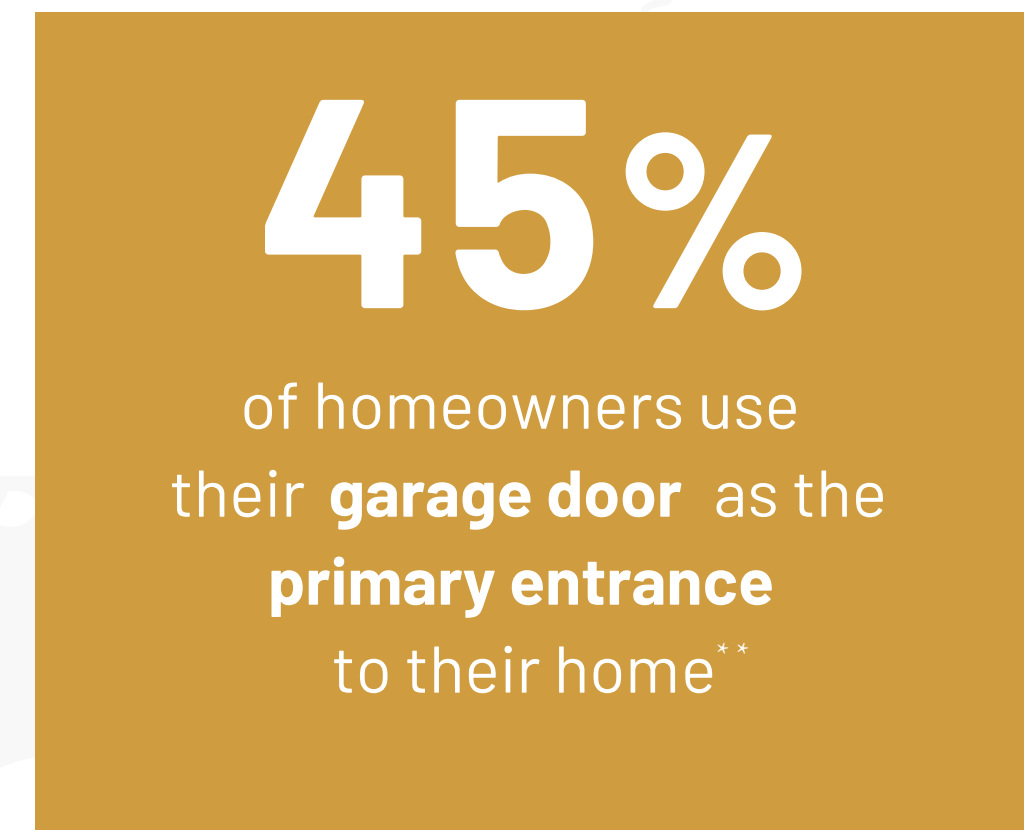
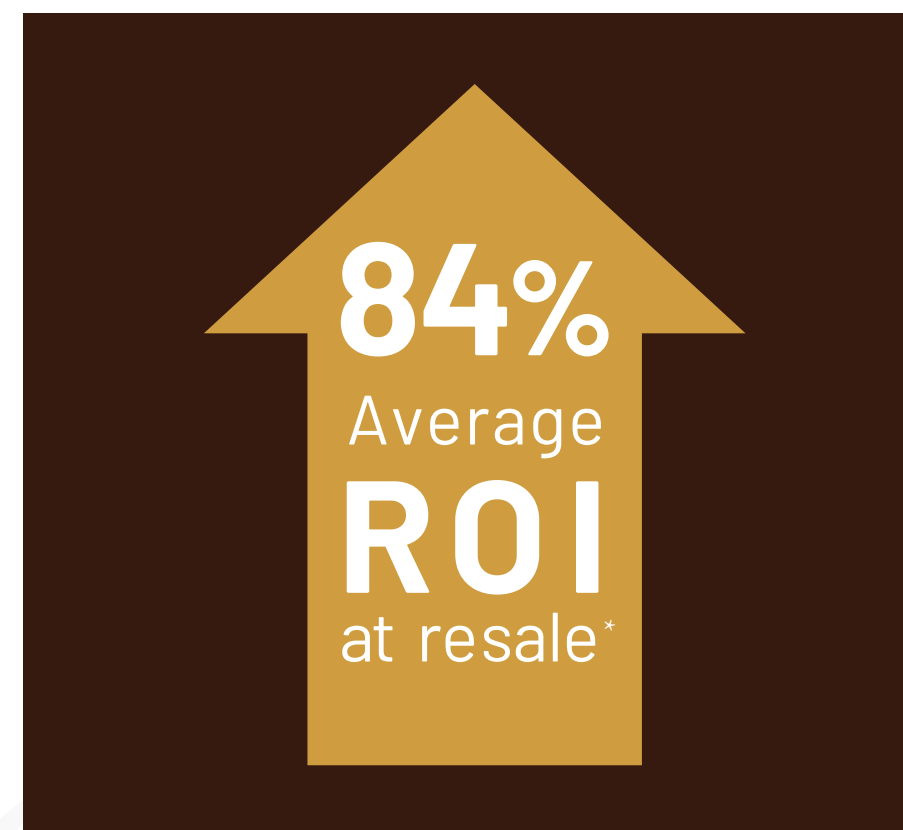
GARAGE DOOR BUYING GUIDE

YOUR STYLE, UNCOMPROMISED



YOUR COMPLETE DOOR GUIDE

Whether you're a new homeowner or are refreshing the look of your existing home, buying a garage door is an exciting opportunity for you to breathe new life into your home's exterior.



* Remodeling Magazines - Cost vs. Value Report (2018)

** Chamberlain Group Study (2008)

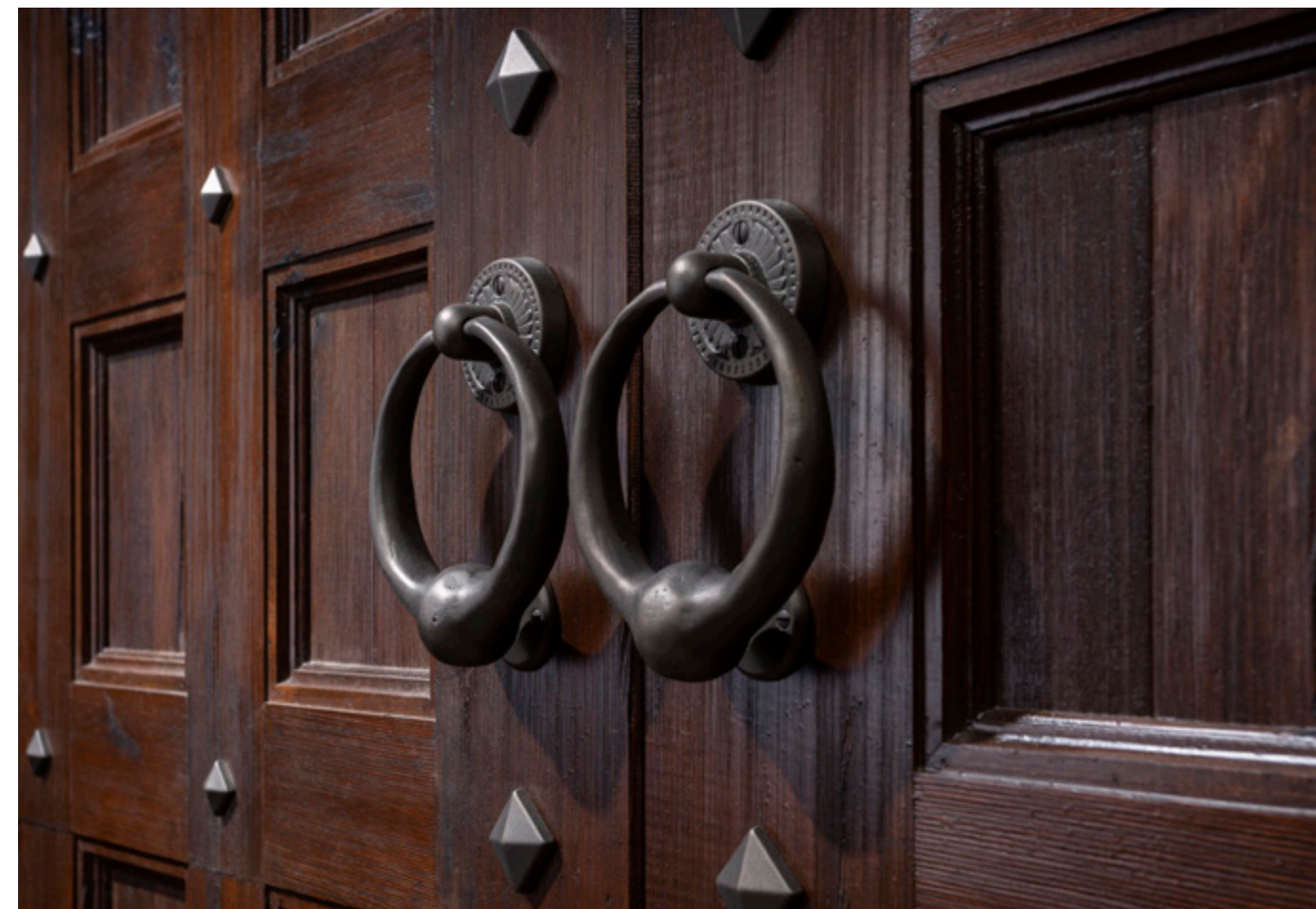
HANDCRAFTED WITH QUALITY CONSTRUCTION

In a time where products are built with sub-standard processes, materials, and labor, Carriage House Door promotes the time-honored tradition of craftsmanship and customization. Each door is built by hand in the United States, with quality checks at every stage of the build to deliver uncompromising dedication to your home.

HAND-CRAFTED



PRECISE DETAILS



QUALITY ASSURANCE

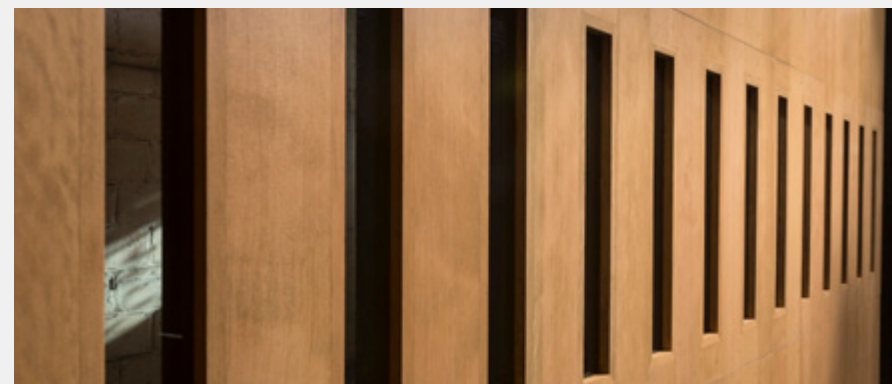


CHOOSING THE RIGHT GARAGE DOOR IS SIMPLE

The process to choose the right garage door is simple.

To get started quickly, follow these steps:

Choose Your Style **1**



Determine which garage door design best suits your home and style.

Remember, even if you're replacing an existing door, you have a variety of styles and options that can compliment the look of your home.

Pick A Material **2**

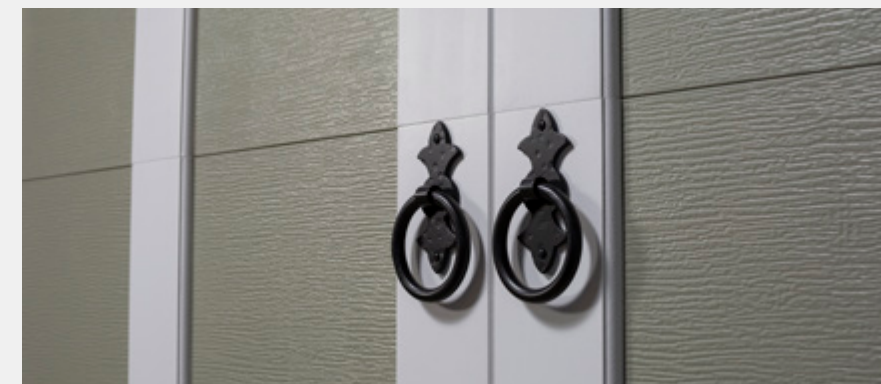


First, decide on the garage door material.

Choose from common materials such as wood, steel, vinyl or aluminum.

Your material selection will influence your garage door's functionality, price, and aesthetic.

Choose Your Design, Finish, and Hardware **3**



The right hardware can make all the difference in a custom door.

There is a wide array of hardware options to accent the aesthetic of your home.

Find A Good Dealer **4**



A qualified dealer will provide pricing as well as determine the correct door size.

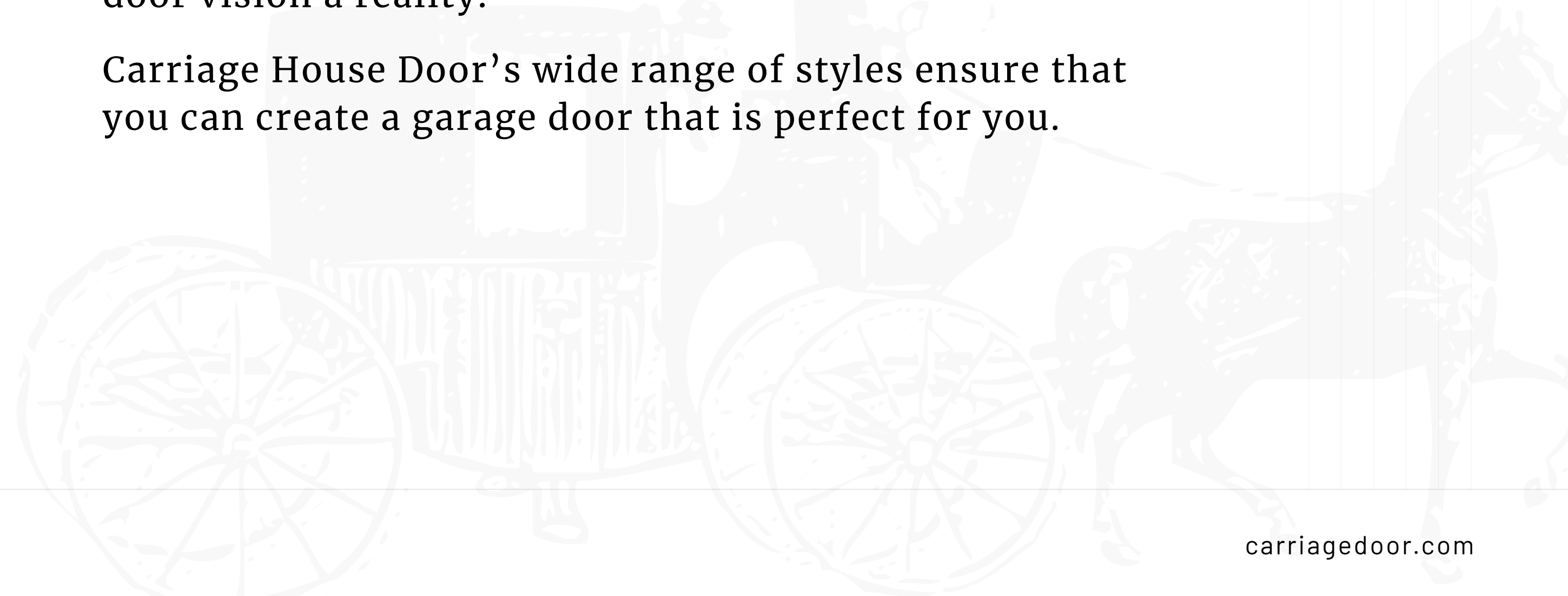


CHOOSE YOUR STYLE



Whether you want a showpiece that catches the eye or an understated door that blends seamlessly into the architecture of your home or neighborhood, a modern masterpiece or a handmade work of traditional design, we have style options that can help you make your garage door vision a reality.

Carriage House Door's wide range of styles ensure that you can create a garage door that is perfect for you.

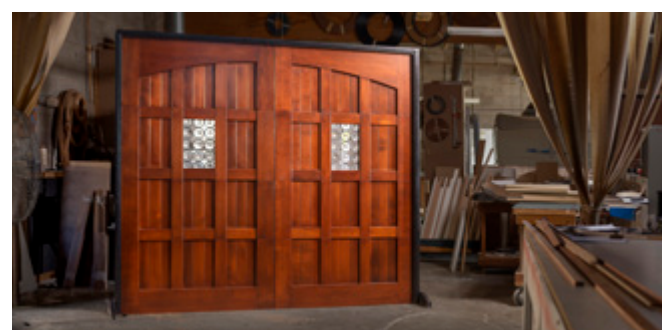
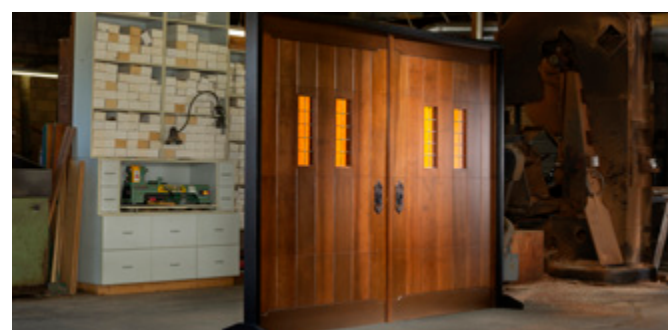


CHOOSE YOUR DESIGN

No matter what style of door you're looking for, Carriage House Door has a design to fit your vision. We have hundreds of design options available in standard and custom sizes in a wide range of materials.

Whatever the style of your home, a custom handcrafted Carriage House door is sure to increase your curb appeal.

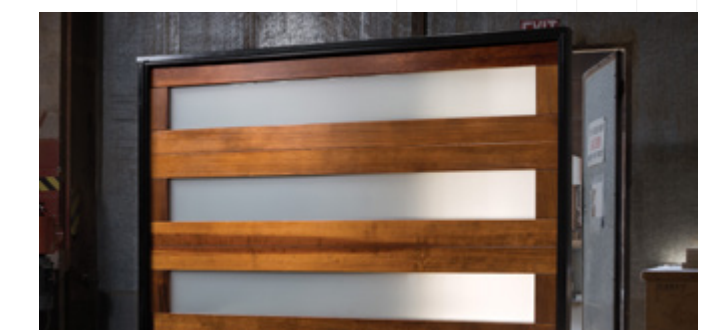
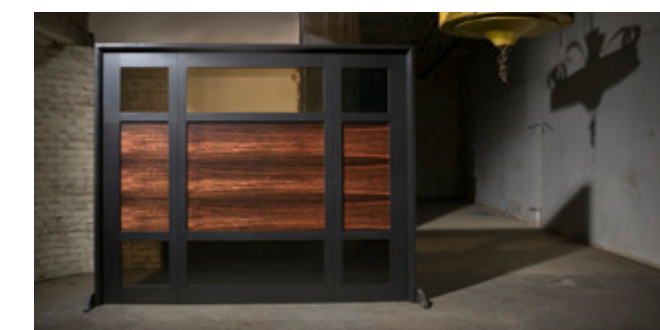
WOOD DESIGNS



STEEL DESIGNS



ALUMINUM & GLASS DESIGNS

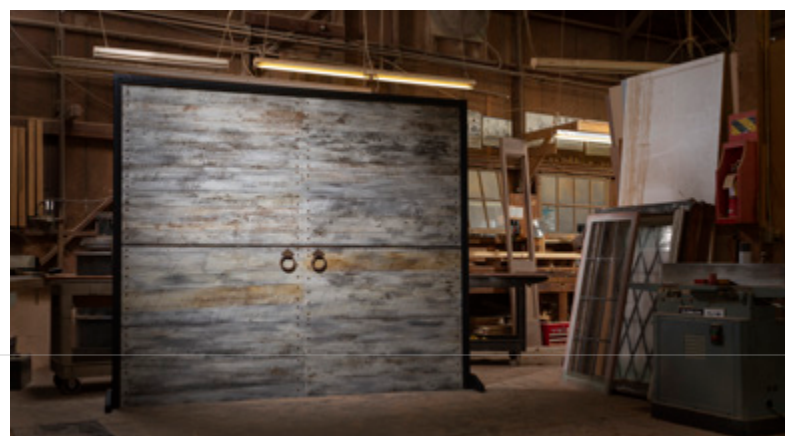


CARRIAGE STYLE COLLECTION

Many customers are looking for garage doors that are true to the heritage of the craftsman.

Our craftsman understand the strength and beauty of the collections defined by the materials that are used, as well as the integrity of the designs.

These doors are available in wood or steel and can be customized with glass, various wood species and hardware, designed to an exacting aesthetic that complements any style.

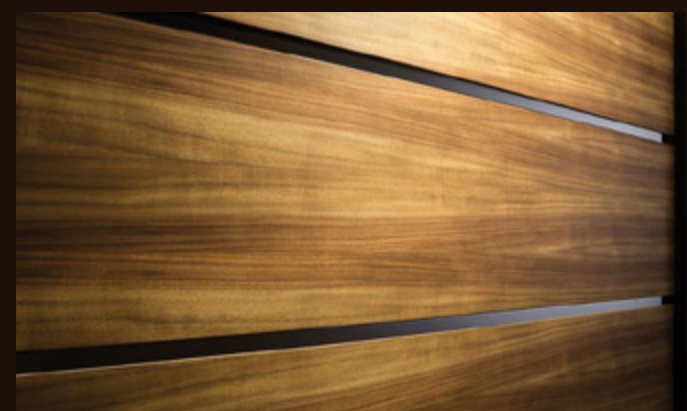


CONTEMPORARY COLLECTION

Many customers are often looking for garage doors that they can't find anywhere else.

Our ever-growing collection of contemporary garage doors is meticulously handcrafted from the finest materials available and customized to the specifications of architects, builders, and homeowners.

These doors are designed to an exacting aesthetic that complements a wide range of home styles from neoclassical to postmodern, and are crafted to defy standard conventions of what a garage door can be.



CHOOSE YOUR DOOR DESIGN

Whether you select one of these standard door designs or choose to customize with your own unique design, our doors are distinguished with finely sculpted trim detail, quality window construction, and superior quality.





CUSTOM GARAGE DOORS

EXCLUSIVELY FROM

CARRIAGE HOUSE DOOR

At Carriage House Door, we know that our customers are looking for the absolute finest garage door available anywhere. And we recognize that sometimes the product you're looking for isn't found in the back catalog.

If you can't find a door you love in our current offerings, we would love the opportunity to custom design and build the garage door of your dreams.

With the support of our experienced designers and craftsmen, we welcome you to design your own individually handcrafted door that we will build to your exact specifications. No design style is too complex; no vision is too difficult to capture.

Whether you want a variation of doors from our existing contemporary or classic designs, or something wholly original, we are excited to make your dream a reality.

OPENING STYLES

Although custom garage doors can be configured with many different types of opening solutions, there are 4 main opening styles for garage doors.

SWING OPENING STYLE



Swinging doors are still one of the most popular solutions for modern carriage style doors. These doors are built in one section or divided into two pieces to deliver authentic time-period correct doors.

In doors built for this style of action, heavy-duty hinge hardware allows the door to swing easily out of the way, either manually or by the use of a specialized automatic opener.

OVERHEAD SECTIONAL OPENING STYLE



Overhead sectional garage doors roll up into the garage ceiling using a standard garage door motor and metal track system.

They typically come in 3 panels, but are also available in various panel configurations depending on design.

BI-FOLD OPENING STYLE



Bi-fold garage doors are the newest and most innovative opening style.

They fold up within the opening of the garage with a counter-weight opening mechanism providing a unique function and design look that does not require the door to roll up into the garage space.

TILT-UP OPENING STYLE



The least common door design is a one-section, tilt-up opening.

Tilt-up doors are pulled back on a pivot before being lifted on a ceiling-mounted track within the garage.

This method requires less exterior space than a swinging door, but does necessitate more room inside the garage itself.

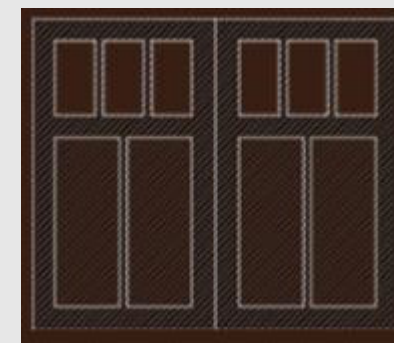
DOOR SIZES



The standard garage door size can vary, and custom garage door manufacturers can build a door to any shape and size.

The most common door style is a single or double garage door.

SINGLE GARAGE DOOR



A single garage door is used in a garage design that has a stall space for a single vehicle and is typically 8 feet wide by 7 feet tall or 9 feet wide by 7 feet tall.



DOUBLE GARAGE DOOR



A double garage door is used with garage designs that have larger openings for stall spaces for 2 vehicles and is typically 16 feet wide by 7 feet tall.

TRADITIONAL OR PANEL

Most garage doors purchased around the world are of the traditional flush or paneled styles. Each of these door styles is traditional and understated, and usually intended to compliment a house's overall design. The right garage door can bring your unique style to the neighborhood.

TRADITIONAL



The most basic door is referred to as flush because its exterior surface is flat with no embossed design.

Sometimes these doors can feature very shallow embossing intended to give the impression of wood grain, but are typically flat and solid color.

PANEL



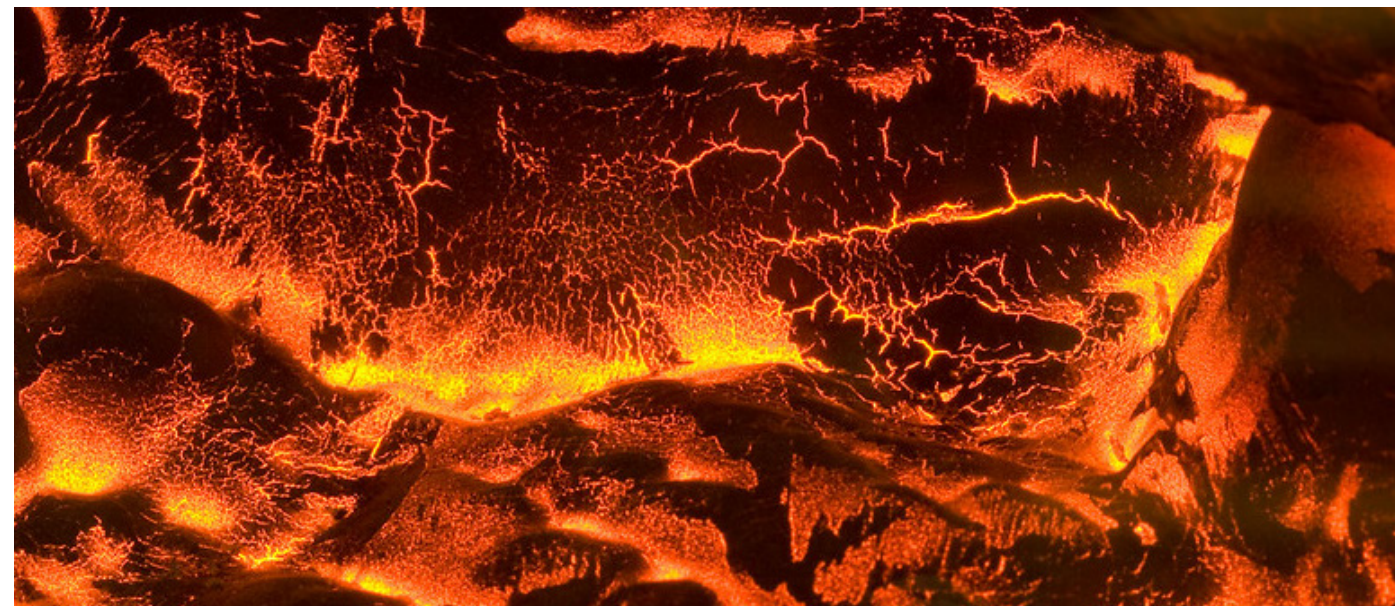
Paneled doors are slightly more designed than their flush counterparts. Paneled doors are typically solid color doors embossed or stamped with a simple rectangular pattern, sometimes with glass inset at the top.

The panel designs can vary depending on the style of the door, but are usually either short panels with anywhere from three to ten rectangles across the door's width or long panels with just one or two.

SPECIALTY DOOR RATINGS

At Carriage House Door Company, we dedicate ourselves to crafting doors that are not only of unsurpassed beauty, but help ensure the safety of homeowners. That is why we offer fire-rated and high-velocity hurricane zone (HVHZ) rated garage doors.

FIRE RATED DOORS



Our fire-rated doors meet the guidelines established by the California office of the State Fire Marshal and meet the conditions of specified acceptance for SFM standard 12-7A-1. (Wildland Urban Interface W.U.I.)

HURRICANE RATED DOORS



Our hurricane-rated garage doors were put through rigorous cycled pressure testing and meet or exceed high-velocity hurricane zone (HVHZ) codes and are Florida building code approved.



UNLOCK THE DOOR YOU'VE BEEN DREAMING OF

The process of creating your custom garage door depends on the choice of your preferred material.

There are a wide selection of material options that can each be personalized to suit your needs and aesthetics.

The material you choose for your garage door doesn't just affect the appearance of your finished piece. Your chosen material is the heart of your new garage door and plays a role in how your door will age and function ten, twenty, or even fifty years down the line.

Whether you choose wood, steel, or aluminum, your selection influences your garage door's functionality, price, and aesthetics.

Use the following pages to help guide your material selection.

MATERIAL MATTERS



WOOD

PROS

- Visually appealing with craftsmanship
- Complete customization options with style, glass, material, and hardware
- Durable and can withstand harsh weather
- Can be easily stained or painted

CONS

- Requires maintenance, but long lasting (can last up to 50 years with regular upkeep)



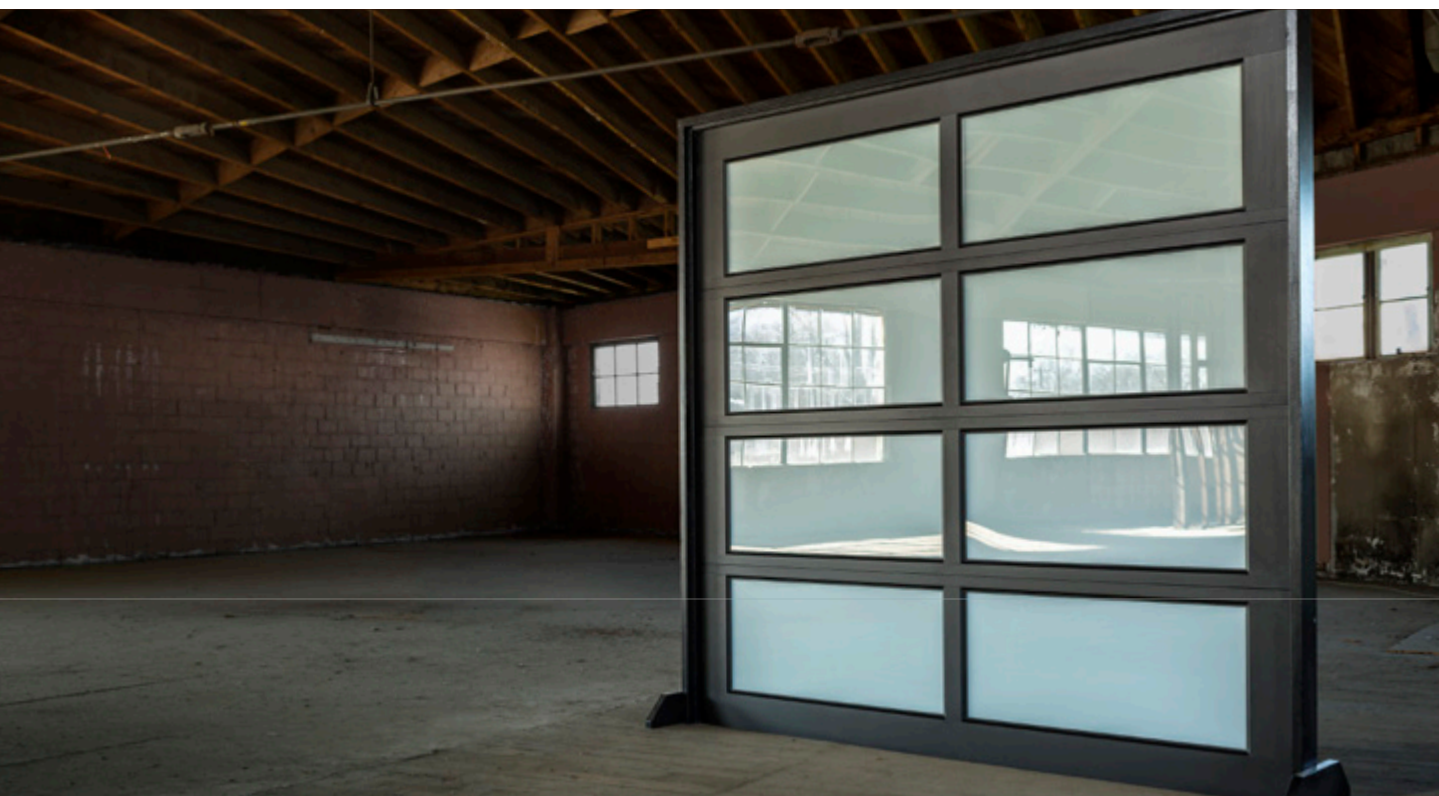
STEEL

PROS

- Durable with less maintenance
- Some customization options with style, colors, windows, and hardware
- Available in wood or other patterns

CONS

- Can dent easily or rust due to material
- If not insulated, it is a poor insulating material



ALUMINUM & GLASS

PROS

- Lightweight
- More modern look

CONS

- Less customization options than wood or steel
- Can dent easily (not ideal for garages or areas where activity is high)
- Lower R-value due to lack of insulation

GARAGE DOOR MATERIAL COMPARISON CHART

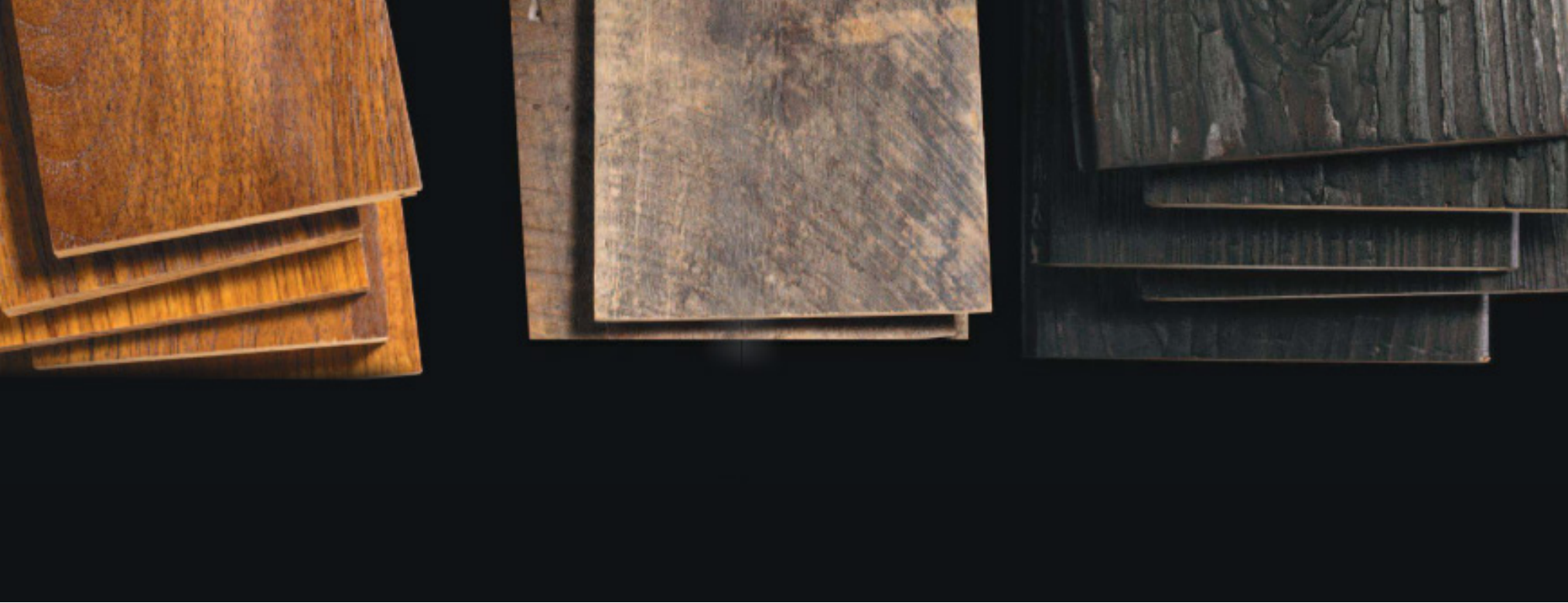
Use this chart as a quick reference to compare the benefits of each door material.



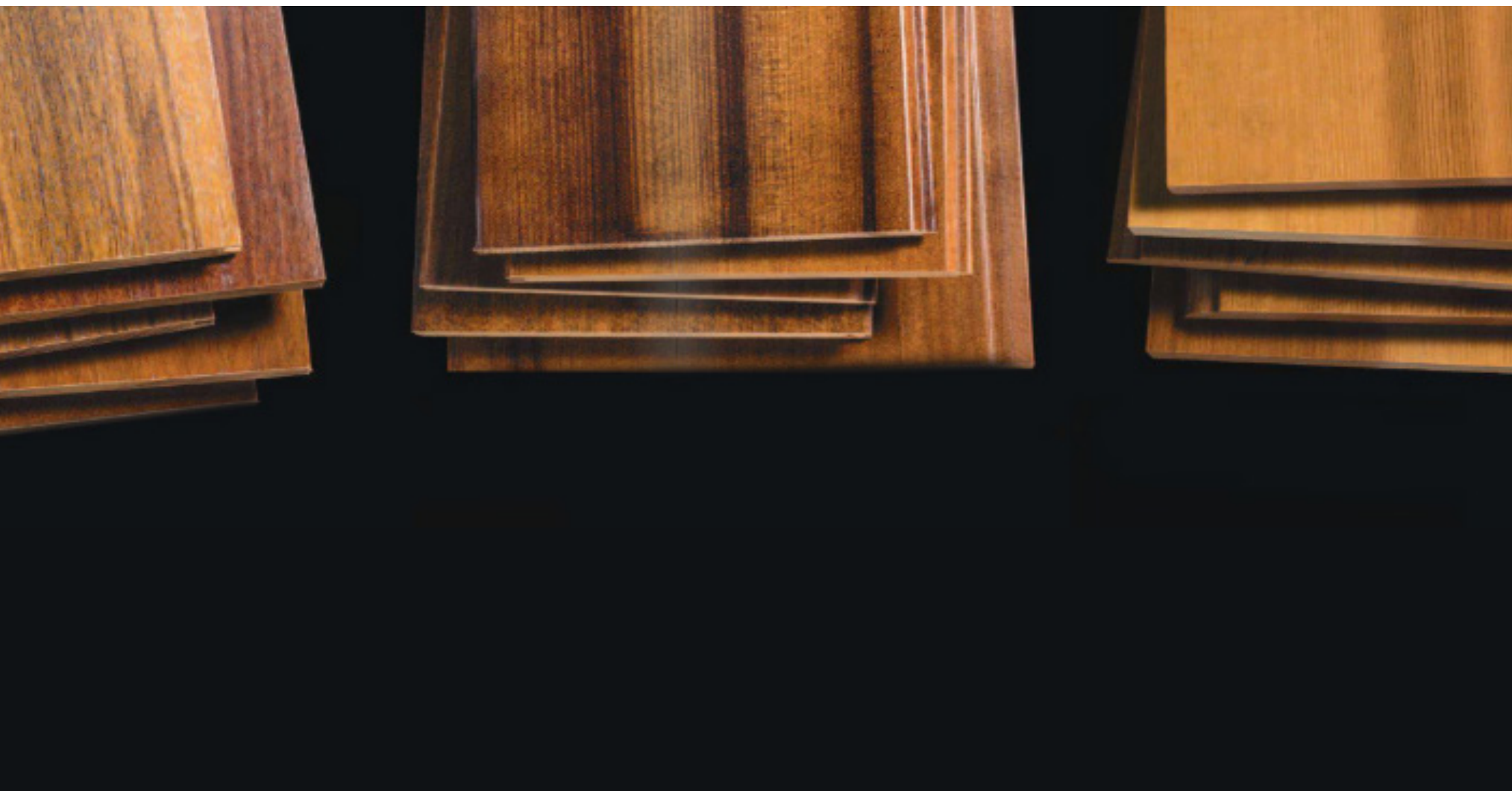
MATERIALS	WOOD	STEEL	ALUMINUM & GLASS	FIBERGLASS*
DURABLE, LONG LASTING	★★★★★	★★★	★★★	★
EASE OF REPAIR	★★★★★	★★★	★	★
ATTRACTIVE, DESIGN, AESTHETICS	★★★★★	★★★★★	★★★★★	★
WIDE RANGE OF STYLES, COLORS	★★★★★	★★★★★	★★★	★★★
CUSTOMIZATION	★★★★★	★★★	★★★	★
CORROSION & FADE RESISTANT**	★★★★★	★★★★★	★★★★★	★★★
LOW MAINTENANCE	★★★	★★★★★	★★★★★	★★★★★
PRICE	\$\$\$-\$\$\$\$	\$\$	\$\$\$-\$\$\$\$	\$\$-\$\$\$



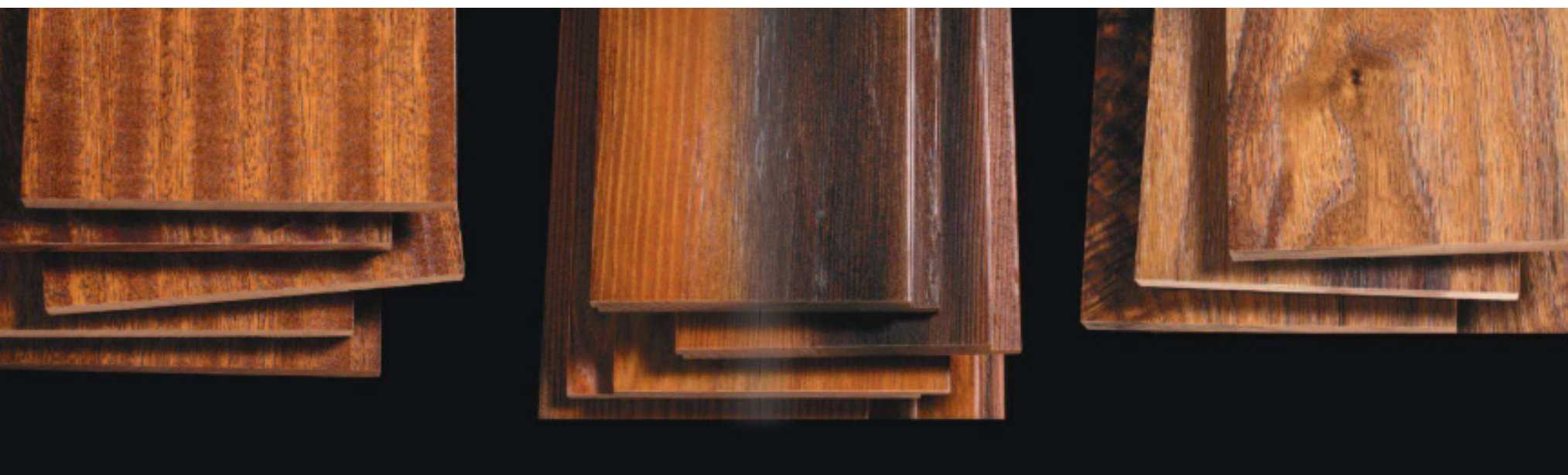
* Not available at Carriage House Door Company.
 ** When properly maintained, wood doors can outperform all other



CHOOSE YOUR FINISH AND TEXTURES



Now that you've decided on a design and material, it's time to choose the finish you want for your garage door. This choice is where you can decide whether you want an elegant natural wood look that blends into the aesthetics of your home, a neighborhood showstopper with a distinctive look, or something in between.



There are many factors to consider in this decision, including the available finishes for the material or design you've chosen as well as the overall style of your home's exterior, including your existing gates, shutters, and trim. Since the garage door is often a major percentage of your home's visible exterior, your choice will not only impact the overall style of your home, it will also decide your home's curb appeal to any prospective buyers if you ever decide to sell.

WOOD FINISH

If you've chosen a design constructed from wood, you may have the option of choosing either stain-grade or paint-grade materials. As discussed previously, the difference between these two finishes is simply the materials used in their construction.

Stain-grade doors are constructed of solid planks which have been milled very smooth and hand joined to create a door in which the natural wood grain and color is working together to create a cohesive, aesthetically beautiful whole.

Paint-grade doors are typically constructed from pieces which may offer a rougher texture overall, but create a beautifully consistent door once paint is applied.

Consider the weather conditions your door will endure as part of this decision. In extreme weather conditions, a natural wood garage door with stain applied may require more maintenance over time than a painted door would. Stain-grade doors are available in wood smooth, resawn, or wire brush textures. Paint-grade doors are only available in a smooth texture.



WOOD FACING OPTIONS

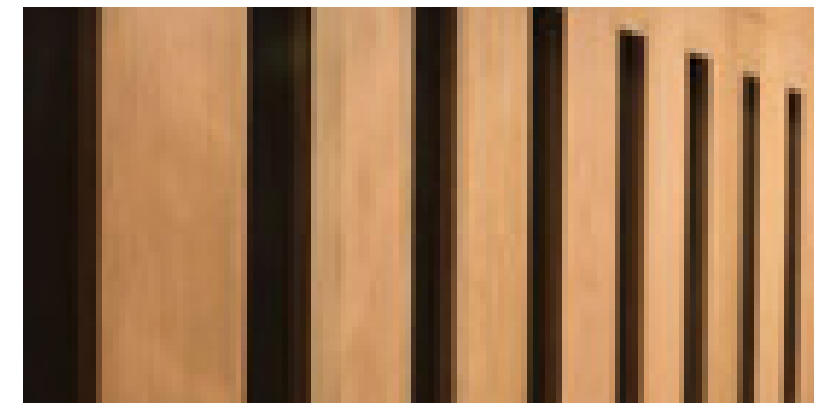
Selecting a wood garage door provides you with the most amount of customization and choice. Many of these common wood options below can be either stained or painted to your desired color.



Clear Heart Redwood



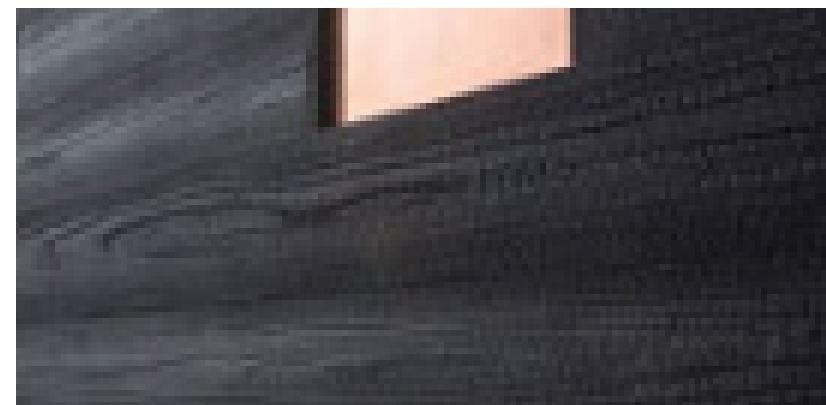
White Mahogany



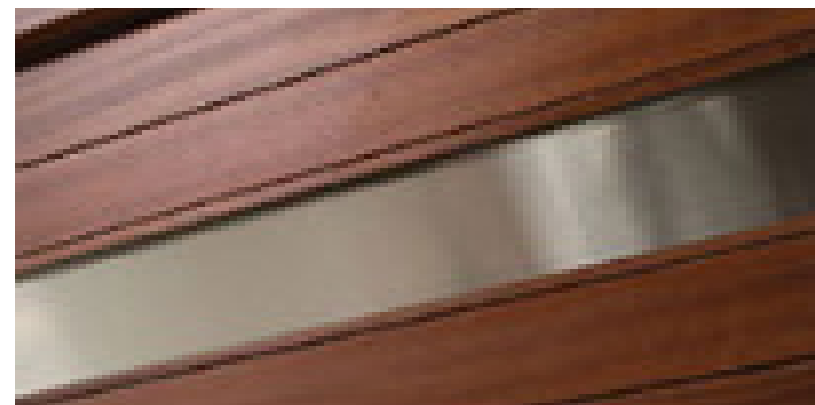
Vertical Grain Douglas Fir



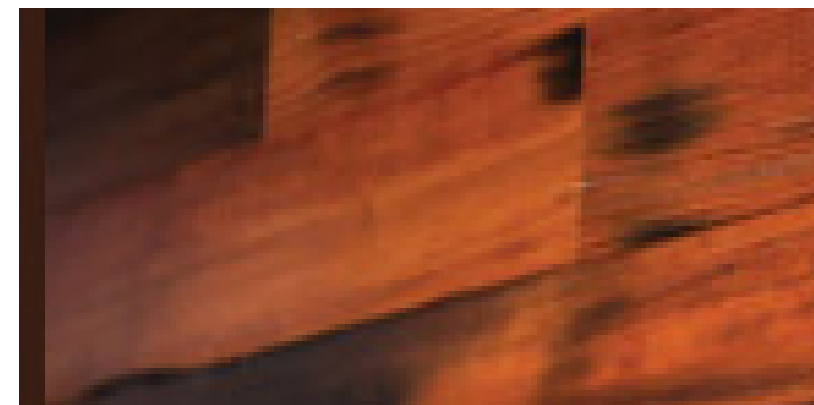
Vertical Grain Western Red Cedar



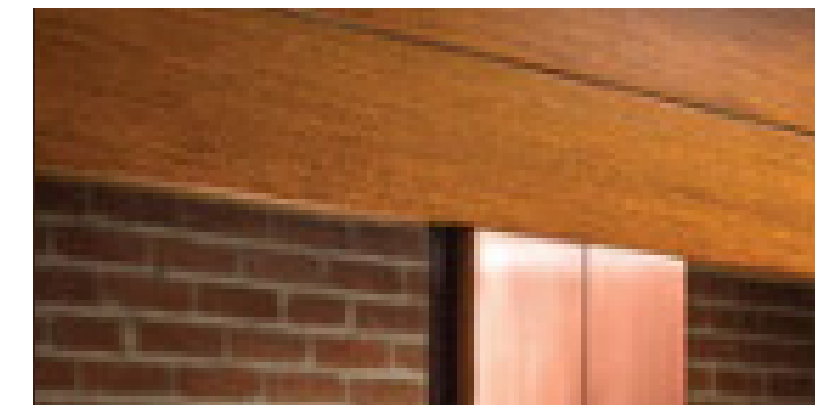
Shou Sugi Ban



Sapele Mahogany



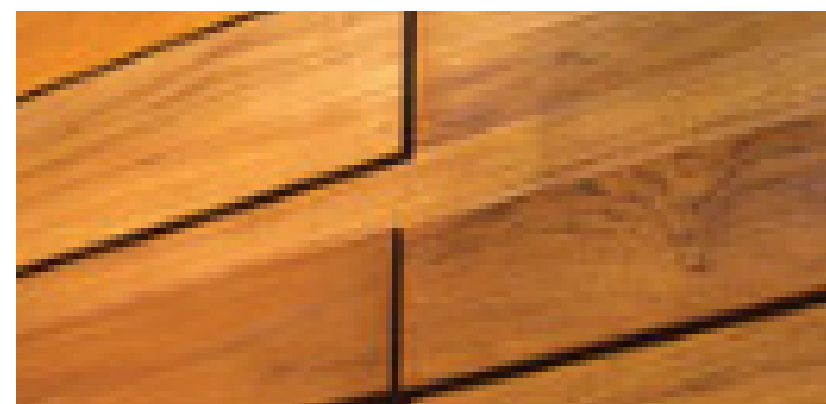
Reclaimed Redwood



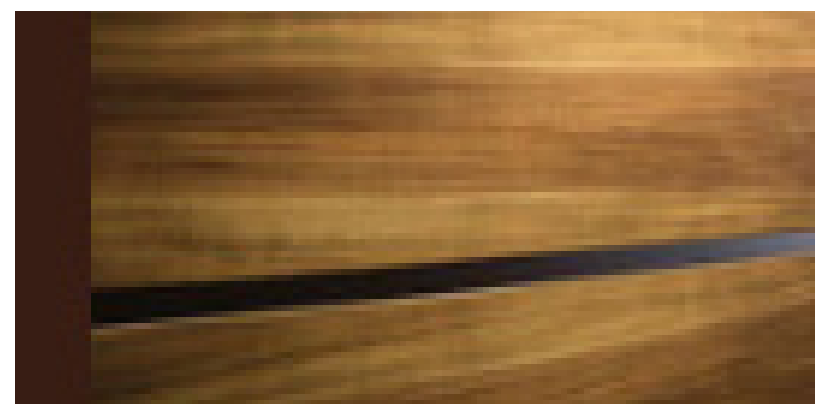
Ipe



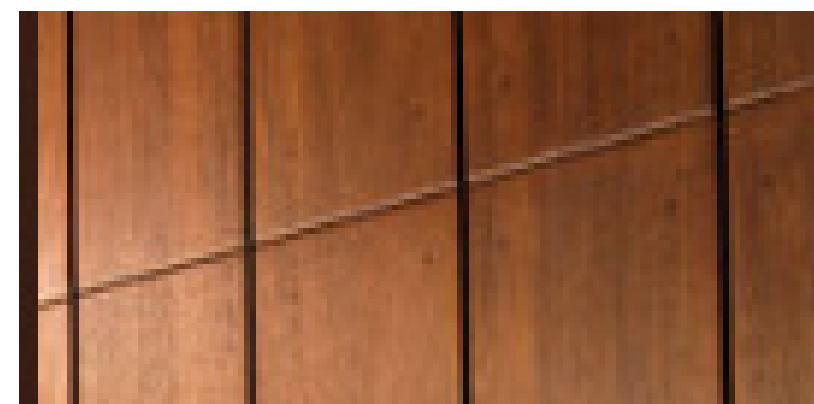
Reclaimed Barn Wood



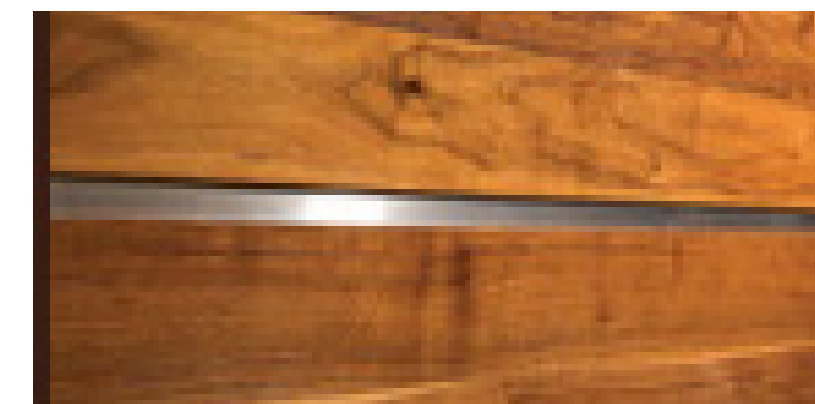
Burmese Teak



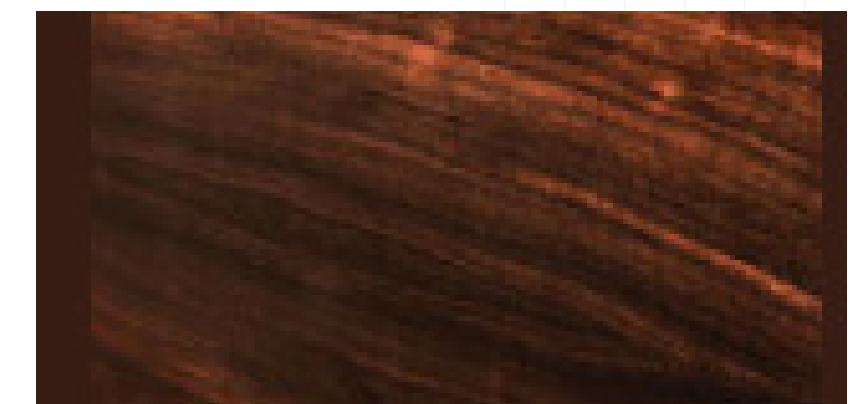
Koa Wood



Fiji Mahogany



Black Walnut - Wire Brushed

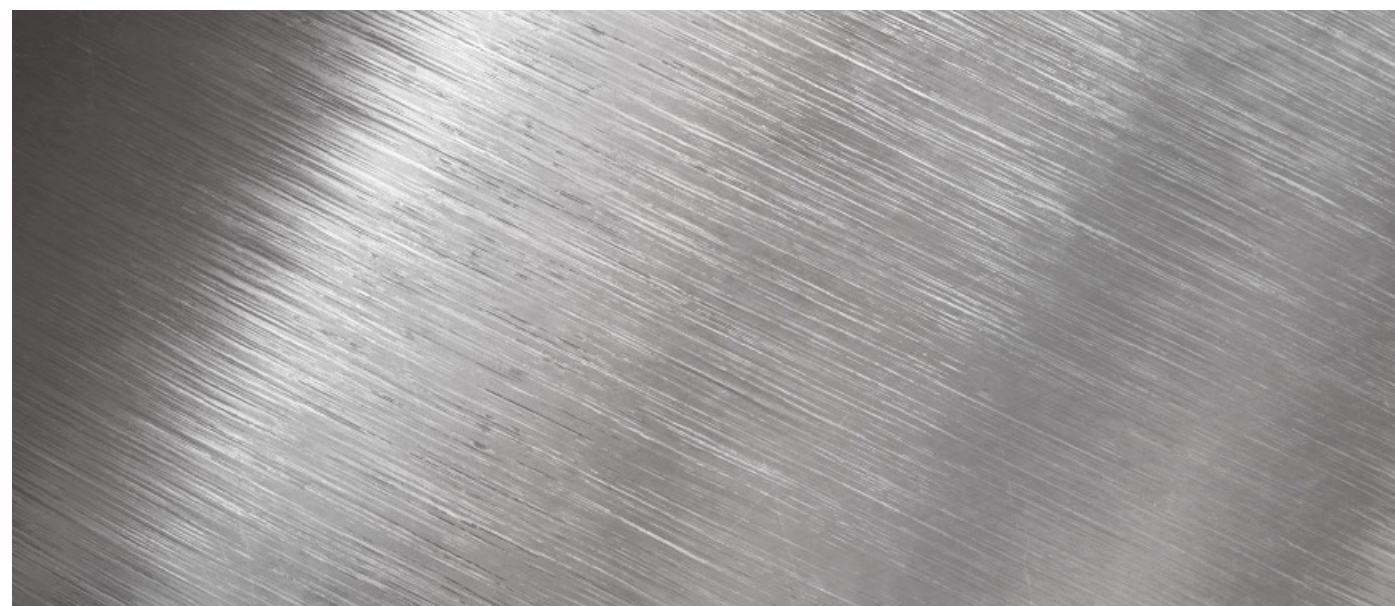


Macassar Ebony

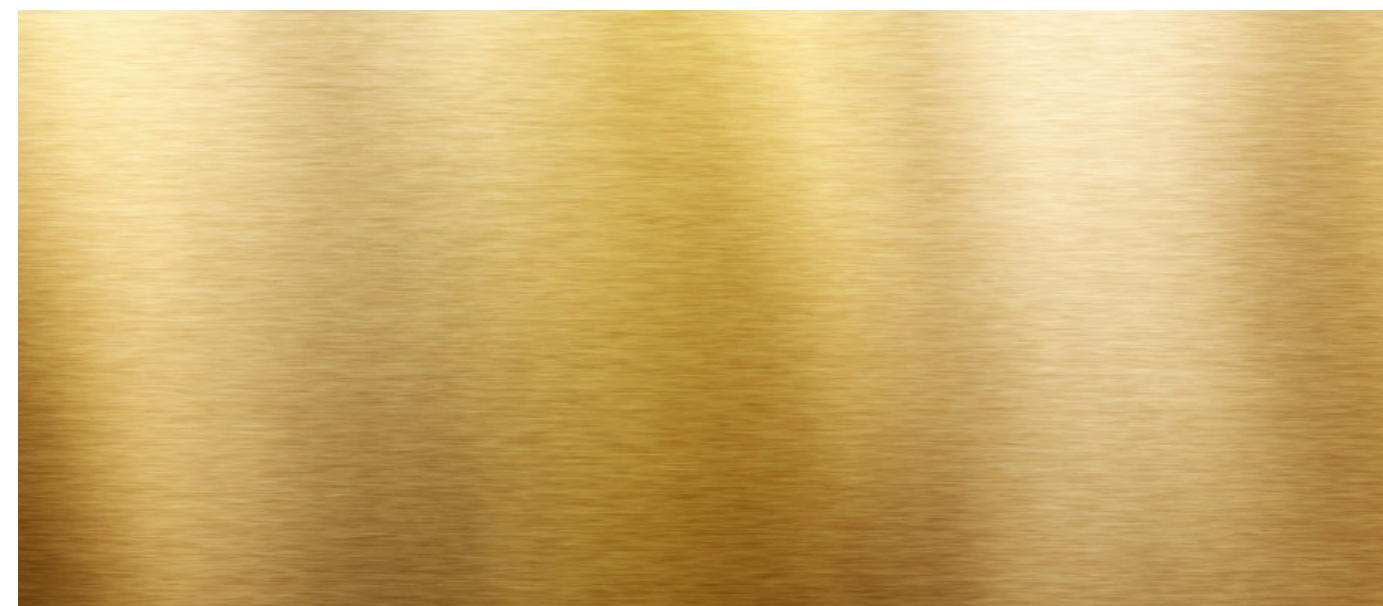
METAL FINISH

For designs constructed from steel, aluminum or other metals, a variety of finishes are available depending on the design and particular requirements of the materials. Some of the finishes available on our metal doors include the following:

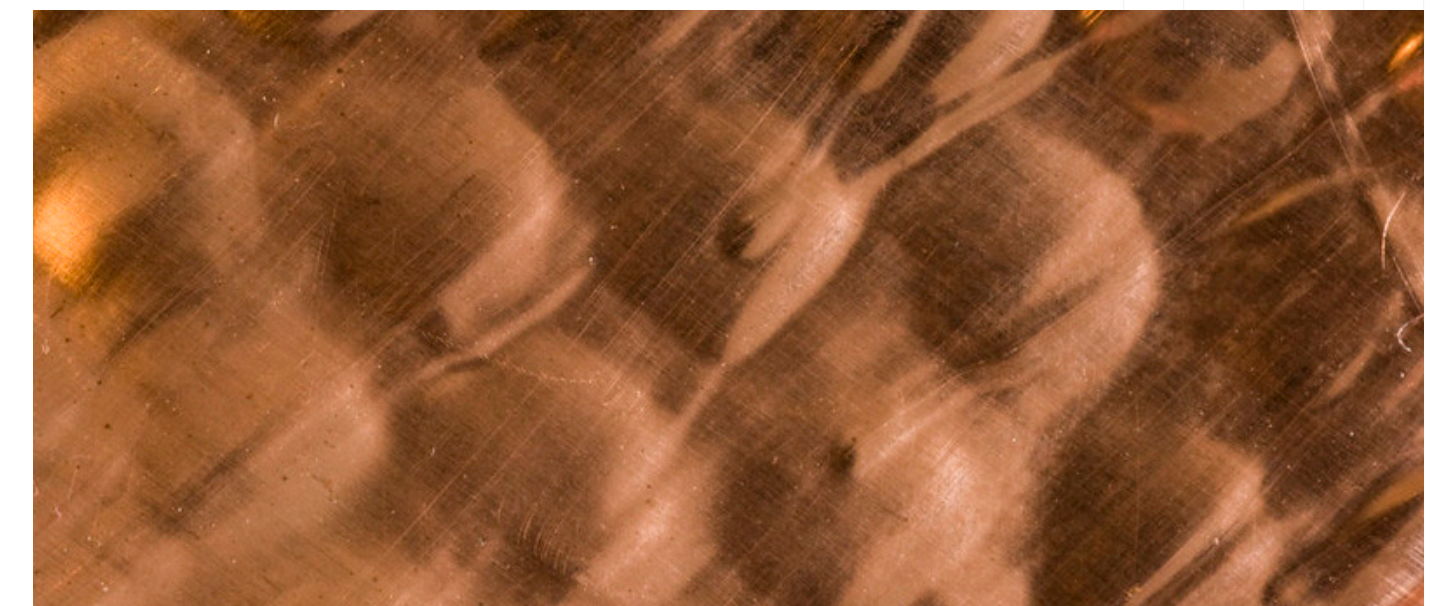
ALUMINUM



BRASS



COPPER



WINDOWS & GLASS

In addition to the finish of your door, you can choose to enhance its beauty with windows or inset glass. Carriage House Door offers many customizable glass options to complement your door's design and to suit your preferences, style, and privacy needs. We also offer impact resistant glass for use in high-wind areas and high-altitude glass for use in areas above 5,000 feet.

Garage door windows are customizable and available in designs that will match almost any There are many things to consider here, including window designs, your individual light needs, and the texture or finish of the glass you prefer. Clear and lightly tinted panes offer an abundance of natural light. Darker tints and pronounced textures offer greater privacy.

Whatever style door you choose, we have just the right glass to enhance its beauty – from clean and contemporary to rustic and antique



GLASS OPTIONS

Depending on the design of your door, your glass finish options include:



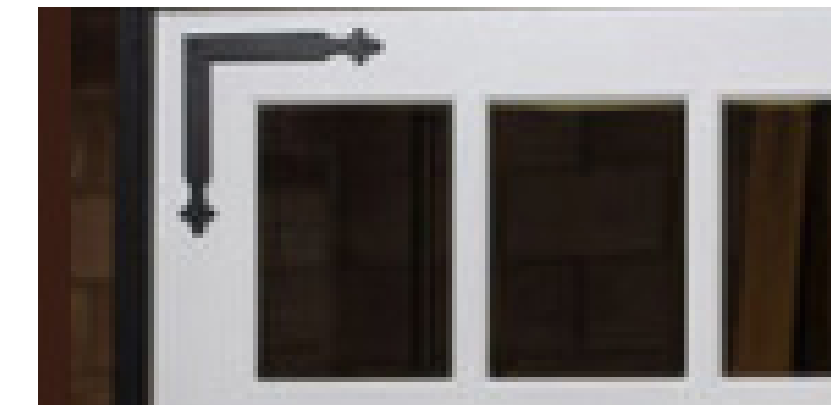
Bronze



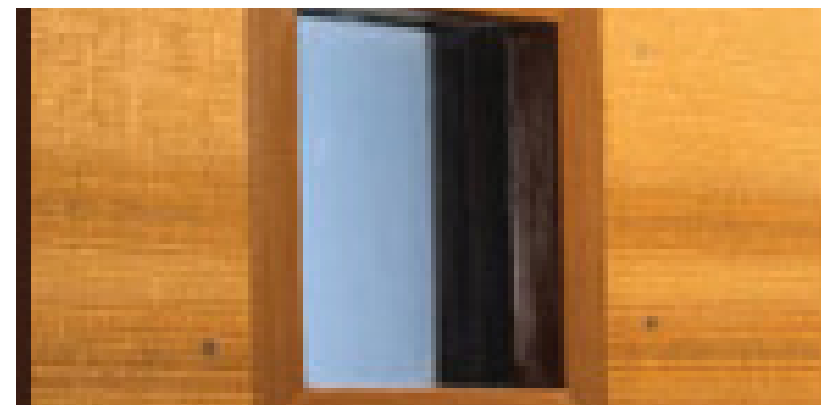
Clear Over Clear



Clear Seedy



GreyLite #2



Grey Over Satin



Hammered



Machine Restoration



New German Antique



Reeded Glass



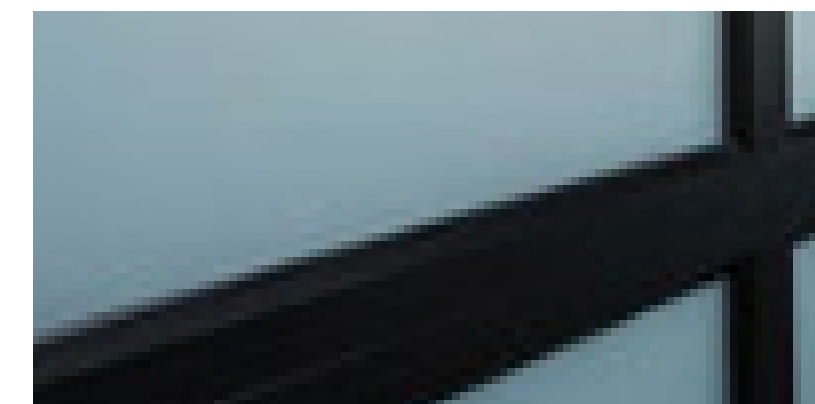
Rough Rolled



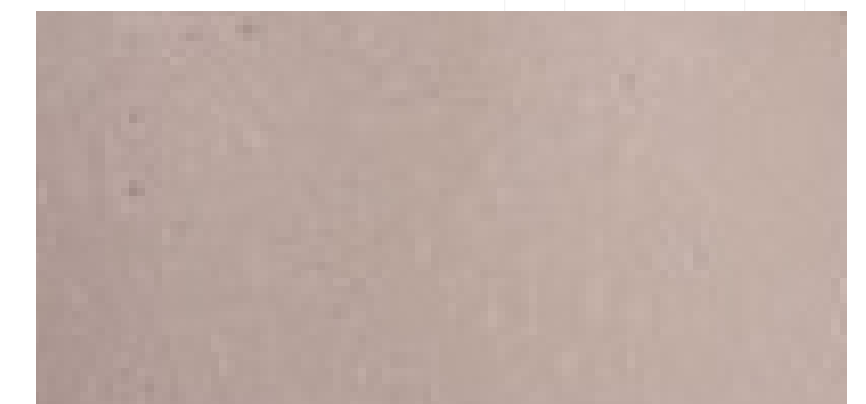
Satin Etched



Seedy Reamy



White Laminate



Wissmach Seedy

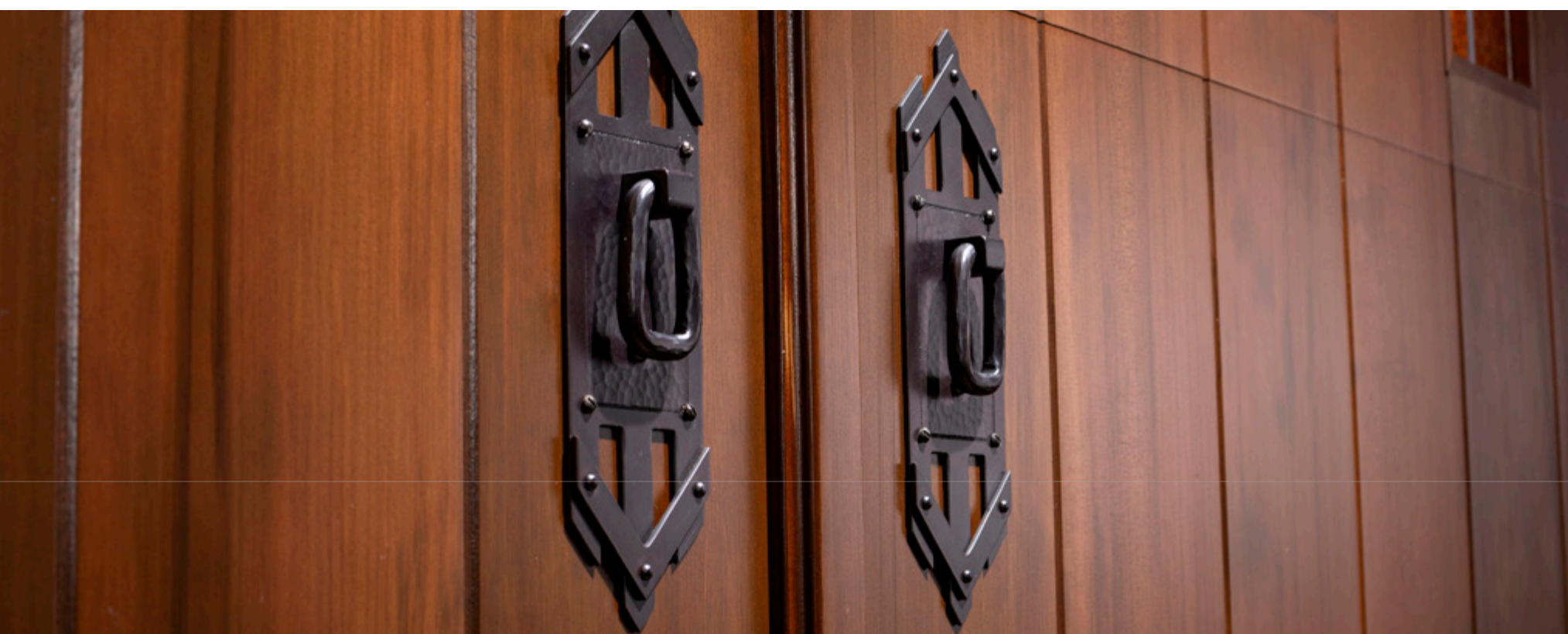


CHOOSE YOUR HARDWARE, LOCKS, & ACCESSORIES



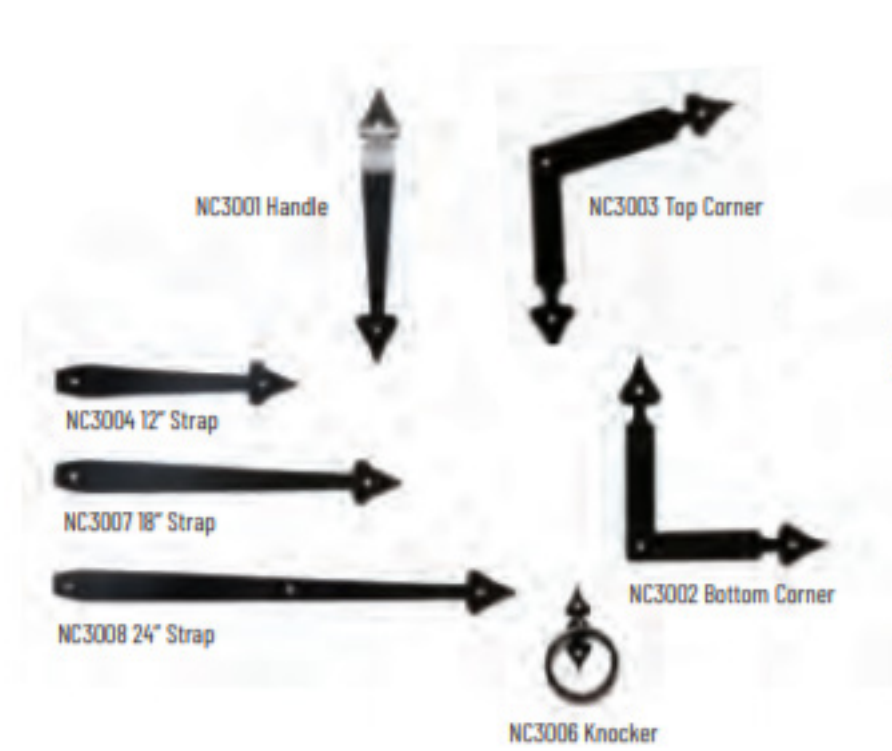
You might have chosen the greatest material, the ideal finish, and the perfect glass, but without the right hardware, your new garage door isn't everything it could be.

The right hardware can make all the difference in creating a design that demands attention, or blends elegantly and seamlessly into the aesthetic of the home. From trim to hinges, decorative inclusions to secure locks, your hardware is an essential part of your door's looks and functionality.

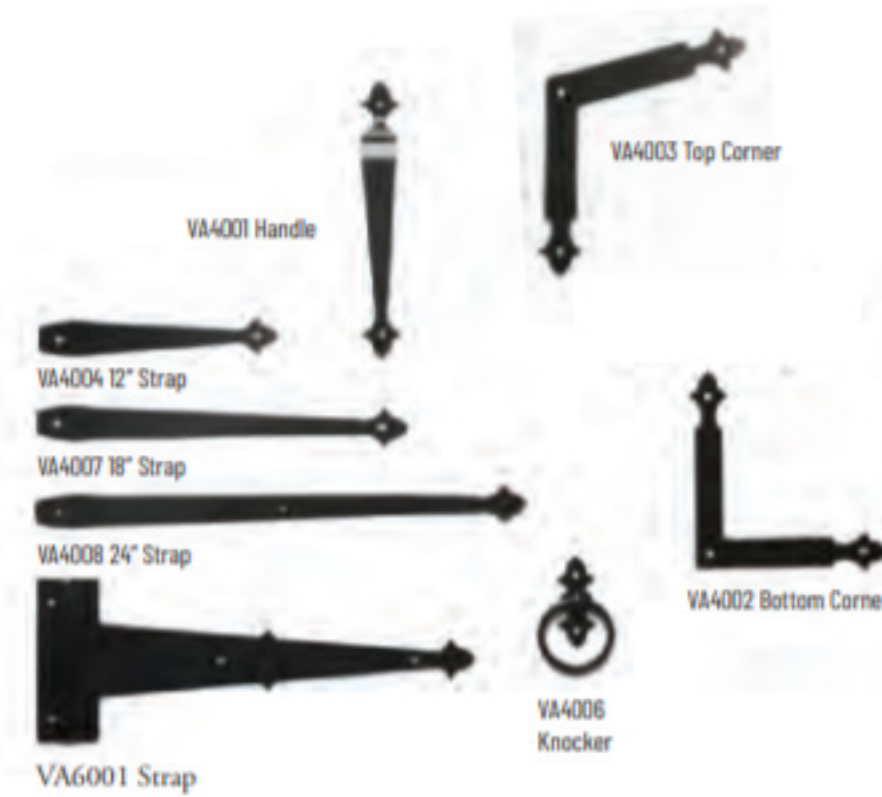


Carriage House Door offers several lines of hardware styles designed to complement many notable design aesthetics from modern to antique. We are also happy to order any third party decorative hardware you might prefer.

HARDWARE OPTIONS



CAROLINA



VIRGINIA



BARCELONA

All Barcelona hardware is hand forged and will vary slightly from piece to piece.



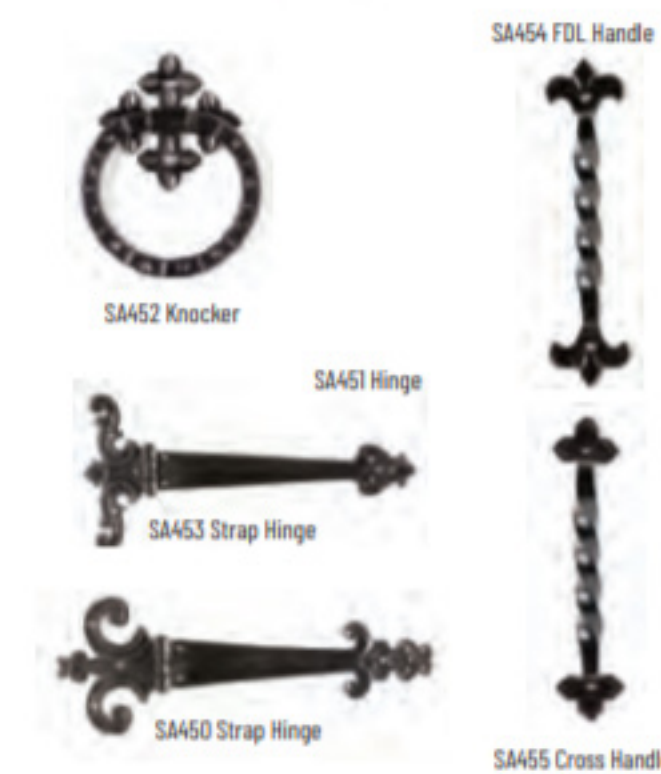
CAMBRIDGE

All Cambridge hardware is hand forged and will vary slightly from piece to piece.



TUSCAN

All Tuscan hardware is hand forged and will vary slightly from piece to piece.



SANTIAGO

All Santiago hardware is hand forged and will vary slightly from piece to piece.

HARDWARE OPTIONS

Patinas



Curved



Shown in Silicon Bronze, dark patina with ring pull.

Stepped



Shown in Silicon Bronze, medium patina with longhorn pull.

Arched



Shown in Silicon Bronze, rust patina with ring pull.

ROCKY MOUNTAIN®
H A R D W A R E

Escutcheons (2-1/2" x 11")

Levers and Rings



Longhorn

Shown in Silicon Bronze, rust patina



Beaver Tail

Shown in Silicon Bronze, rust patina



Euro

Shown in Silicon Bronze, medium patina



Lariat

Shown in Silicon Bronze, dark patina



Ring

Shown in White Bronze, dark patina



Carriage House Door
COMPANY

WEST COAST

121 Main Ave.
Sacramento, CA 95838

866.890.1776

MIDWEST

3150 Dodge Road
Kansas City, KS 66115

800.545.7608

EAST COAST

1571 East Main St/HWY 70
Old Fort, NC 28762

877.668.1601

CARRIAGEDOOR.COM

Garage Doors

-

Gates

-

Shutters

